

## **Historic, Archive Document**

Do not assume content reflects current scientific knowledge, policies, or practices.





The Queen Peach, Elberta

## DEPENDABLE

*Fruit Trees · Grape Vines · Berry Plants*  
*Flowering Shrubs and*  
*Rose Bushes*



**THOMAS MARKS & CO.**  
WILSON, N. Y.

*“The Home of Good Nursery Stock”*



Rochester Peach

**Rochester.** Has the habits and characteristics of the Crawford, but fully two weeks earlier. Yellow, freestone, good size, very sweet and fine flavor, Requires only half the usual amount of sugar for canning. Does not rot on the trees. Since its introduction this splendid variety has brought each season from 20c to 30c a basket more than the prevailing market price. In a class by itself.

**Red Spy.** A solid, bright red Spy, without strips or splashes. It has been recommended to fruit growers by the N. Y. State Fruit Testing Co-operative Association at Geneva as a new variety worthy of trial. December to March.



Red Spy



Cortland Apple

**Cortland.** Tree large, hardy, productive. Fruit large, round. Color greenish yellow overlaid with bright red blushed with darker red. Flesh white, fine, crisp, tender, juicy. Quality very good. Season two to three weeks later than McIntosh.

*“The Home of Good Nursery Stock”*



# THE WILSON NURSERIES

WILSON, NIAGARA CO., NEW YORK



California Privet Hedge and Evergreens

## Greetings to Our Friends and Customers:

**W**E take pleasure in presenting this Catalogue to our many friends and patrons, and thank them for their generous support in the past, a continuance of which we respectfully solicit. To those unacquainted with us, we briefly state that our nurseries are situated in Niagara County, the greatest fruit producing county in the Empire State, if not in the United States, located on the shore of Lake Ontario, near the village of Wilson, in the Garden Spot of the Niagara Fruit Belt.

A trial order will demonstrate the fact that our trees are strictly first-class, thrifty, well developed and possess an abundance of fibrous roots, which are essential to successful transplanting.

All orders, large or small, are filled under our personal supervision.

Our trees remain in the ground all winter. We usually commence digging about April first.

Freshly dug trees—True to Name—A square Deal. A combination hard to beat.

Orders are booked, stock reserved and shipped at the proper time in rotation as received.

Order early. Oftentimes we are sold out of certain varieties before planting time, in which case we return the money. No substitution is allowed in the filling of orders.

## THE WILSON NURSERIES

THOMAS MARKS & CO.  
Nurserymen and Fruit Growers

Bradstreet's Commercial Agency, Buffalo, N. Y.  
R. G. Dun's Commercial Agency, Buffalo, N. Y.  
The Wilson State Bank, Wilson, N. Y.  
Any Business House in Wilson, N. Y.

## This Catalogue is Our Only Salesman

# Fruit Department

## APPLES

THERE are but few parts of the United States where Apples can not be grown. They are planted from 30 to 40 feet apart, depending on the tree growth made by the variety. In commercial orchards, the fewer varieties in one planting, the better. In home orchard plantings the assortment may be as large as desired. The Apples described below are the best known sorts. Their value has been proved and they will produce fine fruit in proper abundance.

### PRICES OF ALL VARIETIES OF APPLE TREES

	Each	10	100
First Class, large size, 2 year, No. 1 Grade, 5 to 7 ft., 3/4 up .....	.60c	\$5.50	\$40.00
First Class, medium size, 2 year, 4 to 6 ft., 5/8 to 3/4 .....	50c	4.00	30.00
First Class, light grade, 2 year, 4 to 5 ft., 1/2 to 5/8 .....	25c	2.25	20.00
Twenty or more at 100 rate			

### Select Summer Apples

**Early Harvest** (Yellow Harvest). Medium, round, yellow, handsome, tender, juicy and very fine. Moderately vigorous, erect grower, productive. August.

**Red Astrachan.** Large, round, nearly covered with deep crimson; very beautiful; flesh white, crisp, acid and good. Tree erect and productive. August.

**Sweet Bough** (Large Yellow Bough). Large, oblong, skin smooth, pale yellow; very tender, crisp, sweet and fine. August to September.

**Yellow Transparent.** A very early apple. Iron-clad in hardiness, and a good grower. Skin a beautiful pale yellow; fruit of good size. Ripens early in August.

### Select Autumn Apples

**Autumn Strawberry.** Medium size, round, oval, flesh white, striped and splashed with red; tender, juicy and pleasant. October.

**Alexander.** Fruit greenish yellow, faintly streaked with red on the shady side, bright red in the sun; flesh tender and juicy with a pleasant flavor. October.

**Duchess of Oldenburg.** A beautiful Russian apple; skin yellow, streaked with red, with a faint blue bloom; flesh juicy and good. September.

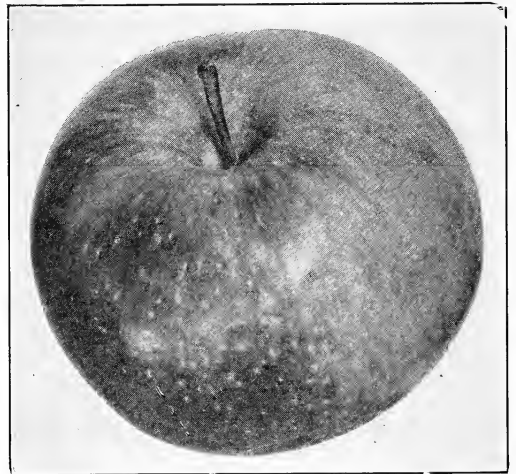
**Fall Pippin.** Very large, roundish, oblong yellow; flesh tender and delicious. October to December.

**Gravenstein.** Large, roundish, yellow and red striped; handsome; tender, juicy, high flavored and excellent. September to October.

**Maiden's Blush.** Medium size, flat, quite smooth and fair, pale yellow with a beautiful red cheek; tender, sub-acid. September and October.

**Pound Sweet** (Lyman's Pumpkin Sweet). Very large, round, greenish; sweet, rich and tender; excellent for baking. October and November.

**Wealthy.** This beautiful moderate sized, brilliant red apple is of fine quality, one of the best of its season; it is a relatively good keeper, and owing to the hardiness of the tree, its adaptability to cold climates, and early bearing habits, it can be profitably planted as a filler. Season October to January.



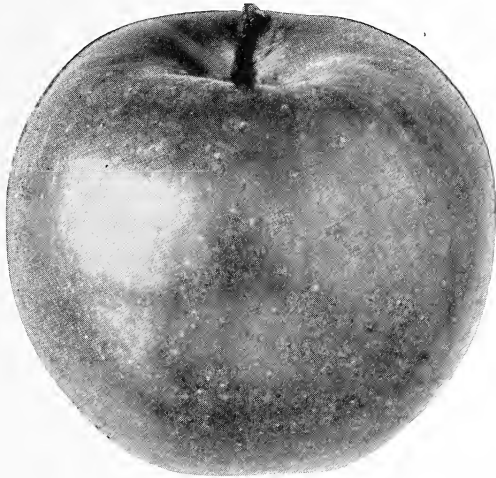
Wealthy

### Select Winter Apples

**Baldwin.** Large, round, deep bright red; juicy, crisp, sub-acid, very good flavor. Tree very vigorous, upright and very productive of fair, handsome fruit. December to March.

**Ben Davis** (New York Pippin). Large, round, splashed with bright red on yellowish ground; tender, juicy, mild, sub-acid and pleasant flavor. Late keeper.

**Cortland.** Tree large, hardy, productive. Fruit large, round. Color greenish yellow overlaid with bright red blushed with darker red. Flesh white, fine, crisp, tender, juicy. Quality very good. Season two to three weeks later than McIntosh.



Cortland

**Delicious.** No new variety has ever so quickly gained popularity in so many different apple sections of our country. Fruit large, nearly covered with brilliant dark red, flesh fine grained, crisp and melting, juicy with a delightful aroma, of very highest quality. A splendid keeper and shipper. Tree one of the hardiest. November to April.

**English Russet.** Medium size, ovate or conical, yellow russet; sub-acid. A strong upright grower, and a regular annual bearer. Keeps till June.

**Fameuse (Snow Apple).** Medium size, round, very handsome, deep crimson; flesh snowy white, tender, juicy, high flavored and delicious. November to February.

**Gano.** Similar but superior to Ben Davis. The tree is vigorous and hardy; is a rapid grower; bears while young; color bright red, without stripes or blotches. February to March.

**Golden Russet.** Medium size, dull russet, with a tinge of red on sunny side; flesh greenish, crisp, juicy. November to April.

**Grimes' Golden.** Medium to large, cylindrical, flesh yellow and firm, very fine grained with a rich, refreshing flavor; of the best quality. January to April.

**Hubbardston Nonesuch.** Large, round, beautiful, yellow and red; tender, juicy, aromatic, rich and delicious. Tree a strong grower and productive. November to January.

**Jonathan.** Medium size, pale yellow, striped with red; flesh white, tender and juicy, of the Spitzenburg class; the tree is an abundant bearer. November to March.

**King of Tompkins County.** Very large, round, oblate, yellow striped and clouded, an abundant annual bearer. December to April.

**McIntosh Red.** Tree very hardy and vigorous; a good bearer; handsome fruit of excellent quality; above medium size; skin whitish yellow nearly covered with dark, rich crimson; flesh white, tender, juicy, sub-acid. November to February.

**Northern Spy.** Large, round, striped with red, with a pale bloom; remarkably tender, juicy, high flavored and delicious. January to April.

**Red Spy.** A solid, bright red Spy, without stripes or splashes. It has been recommended to fruit growers by the N. Y. State Fruit Testing Co-operative Association at Geneva as a new variety worthy of trial. December to March.

**Rhode Island Greening.** Everywhere well known and popular; spreading and vigorous; a great and constant bearer in nearly all soils and situations; fruit rather acid, but excellent for dessert and cooking. Keeps well until March or April.

**Rome Beauty.** Large; yellow and bright red; handsome; medium quality; good bearer. December to March.

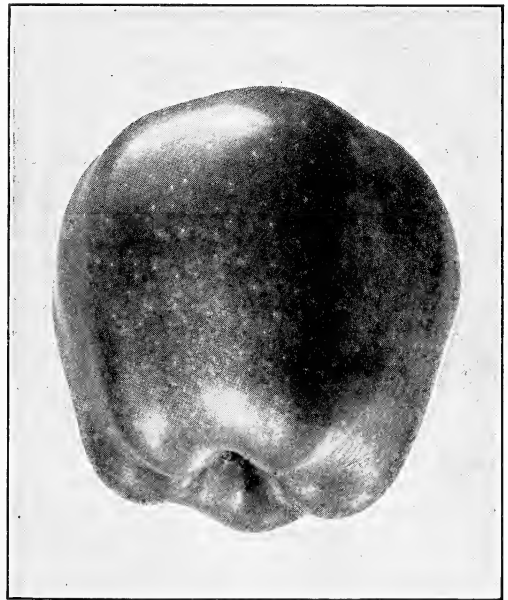
**Roxbury Russet.** Medium to large; greenish, covered with russet. Spreading, and a great bearer; keeps till June.

**Sutton Beauty.** Medium to large; roundish, handsome; skin waxen yellow, striped with crimson; flesh whitish, tender, juicy, sub-acid; very good; keeps remarkably well. A handsome grower, and productive. Valuable. January and February.

**Twenty Ounce.** Very large, yellow, striped red, fine quality apple; good keeper. October to January.

**Tolman's Sweet.** Medium size; pale, whitish yellow, tinged with red; firm, rich, and very sweet; excellent for cooking. Upright, and very productive. November to April.

**Wine Sap.** Large; roundish; deep red; medium quality; keeps well. A good bearer; succeeds well in the West. December to May.



Delicious

**Winter Banana.** Large, clear pale yellow, with beautiful pinkish red blush, good for dessert. Bears young.

**Yellow Bellflower.** Large; yellow with a tinge of red; crisp, juicy. Valuable for baking. Good bearer. November to April.

**York Imperial.** Medium; whitish, shaded with crimson; firm, crisp, juicy, pleasant, sub-acid. Moderately vigorous and productive. Popular in Pennsylvania. November to February.

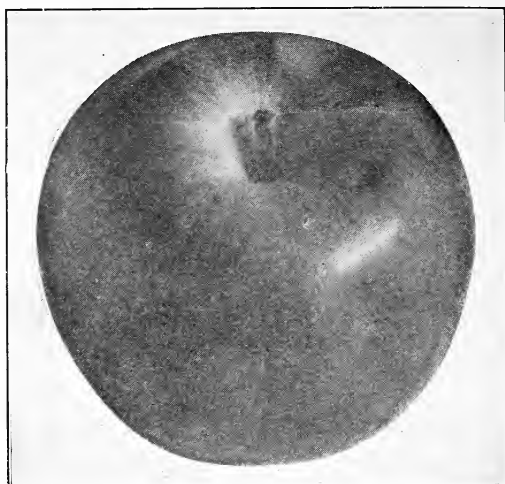


## CRAB APPLES

For Ornament or Preserving

**Hyslop's.** Large, deep crimson. October.

**Transcendent.** Red and yellow. A popular variety. September.



McIntosh Red



## Select Pears

THE home orchard is not complete without pears and they are a very profitable commercial crop in nearly all parts of the country. Pears will live on a variety of soils, but succeed exceptionally well in a hard clay soil. Tilling and fertilizing are advisable to a certain extent, but should not be carried far enough to produce too vigorous a growth. The quality of the pear is much improved by picking before maturity and by proper ripening indoors.

### PRICES OF ALL VARIETIES OF PEAR TREES

	Each	10	100
First Class, large size, 2 year, No. 1 Grade, 5 to 7 ft., 3/4 up 65c	\$5.50	\$50.00	
First Class, medium size, 2 year, 4 to 6 ft., 5/8 to 3/4	50c	4.00	35.00
First Class, light grade, 2 year, 3 to 5 ft., 1/2 to 5/8	40c	3.00	25.00
Twenty or more at 100 rates.			

### Summer Pears

**Bartlett.** One of the most popular pears; large, buttery, and melting, with a rich musky flavor. A vigorous, erect grower; bears young and abundantly. Middle to last of September.

**Clapp's Favorite.** A splendid pear, resembling the Bartlett and ripening a few days earlier; a cross between that variety and the Flemish Beauty; the tree is hardy and vigorous either on the pear or quince. Care should be taken to pick the fruit at least ten days before it would ripen upon the tree.

### Autumn Pears

**Flemish Beauty.** Large, pale yellow, brownish cheek; melting and delicious. September to October.

**Keiffer's Hybrid.** Large, rich golden, slightly coarse, juicy, with a pronounced quince flavor. October to November.

**Sheldon.** Large, round, russet with a red cheek; melting, juicy, rich, sugary, perfumed and delicious. One of the finest pears. October and November.

**Seckel.** Medium to small, yellowish brown with a red cheek; melting, sweet, spicy, very rich and delicious. The standard of excellence. October.



Bartlett

GUARANTEED ABSOLUTELY TRUE TO NAME



**Vermont Beauty.** A beautiful new seedling pear; fruit of medium size, round; skin yellow, nearly covered with carmine; flesh melting, sprightly, very good. October.

**Worden Seckel.** A seedling of Seckel. Fruit medium size, borne in clusters; juicy, buttery, fine-grained, with a flavor and aroma fully equal to that of its parent. October.

**Winter Pears**

**Beurre Bosc.** Large, long, cinnamon russet, handsome; half-melting, juicy, rich, slightly perfumed and delicious. October.

**Beurre d'Anjou.** Large, obovate, pyriform, greenish russet, sometimes shaded with crimson, melting, juicy, vinous, perfumed, rich and delicious. October.

**Duchess d'Angouleme.** Very large, greenish yellow; melting, sugary and aromatic. December.



**Cherries**

**PRICES OF ALL VARIETIES OF SWEET CHERRIES**

	Each	10	
First Class, large size, 2 year, No. 1 Grade, 5 to 7 ft., 3/4 up.....	75c	\$6.50	
First Class, medium size, 2 year, 4 to 5 ft., 5/8 to 3/4.....	60c	5.00	
Five or more at 10 rates.			

**Sweet Cherries**

**Heart and Bigarreau**

**Bing.** One of the most delicious sweet cherries. Fruit is large, black, and of very fine quality.

**Black Tartarian.** Very large, bright purplish black; half tender, juicy, very rich, excellent flavor; productive. Free. First or middle of July.

**Gov. Wood.** One of the best cherries; very large; light yellow marbled with red; juicy, rich and delicious. Tree healthy and a great bearer. Hangs well on the tree. Vigorous. Last of June.

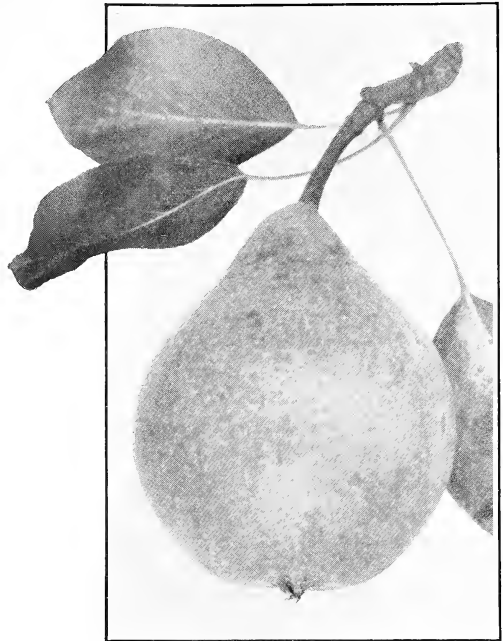
**Lambert.** Largest size, firm, rich and juicy; purplish red, almost black when ripe.

**Napoleon Bigarreau.** Very large, pale yellow or red; very firm, juicy and sweet; very productive; one of the best. Vigorous. First of July.

**Schmidt's Bigarreau.** Remarkably hardy and productive. Fruit of the largest size; a deep mahogany color; flesh dark, tender, juicy with a fine rich flavor. July.

**Windsor.** Fruit large; liver colored; flesh remarkably firm, of fine quality. Tree hardy and prolific. Vigorous. Middle of July.

**Yellow Spanish.** Large, pale yellow, with red cheek; firm, juicy and excellent; one of the best light colored cherries; productive. Free. Last of June.



Seckel

**PRICES OF ALL VARIETIES OF SOUR CHERRIES**

	Each	10	100
First Class, large size, 2 year, No. 1 Grade, 5 to 6 ft.....	60c	\$5.50	\$50.00
First Class, medium size, 2 year, 4 to 5 ft.....	50c	4.00	35.00

Twenty or more at 100 rates.

**Sour Cherries**

**Early Richmond.** Medium size; dark red; melting juicy, sprightly, acid flavor. This is unsurpassed for cooking purposes, and is exceedingly productive. Free. June.

**English Morello.** Medium to large; blackish red; rich, acid, juicy and good; very productive. August.

**Montmorency.** A large red, acid cherry, larger than Early Richmond and fully ten days later. Very profitable. Last of June.



Montmorency

# Plums

## Plums of European Type

### PRICES OF ALL VARIETIES OF PLUM TREES

	Each	10	100
First Class, large size, 2 year, No. 1 Grade, 5 to 7 ft., 3/4 up 60c	\$5.00	\$40.00	
First Class, medium size, 2 year, 4 to 5 ft., 5/8 to 3/4 . . .	50c	4.00	30.00
Twenty or more at 100 rates.			

**Bradshaw.** A very large, oval, dark violet red; juicy, sweet and good; a valuable market variety. Tree very vigorous, erect and productive. Middle of August.

**Fellenburg** (Italian Prune). A fine late plum; oval, purple; flesh juicy and delicious; parts from the stone; fine for drying. Tree very productive. September.

**German Prune.** A small, long, oval variety, much esteemed for drying; color dark purple; of very agreeable flavor. September.

**Grand Duke.** As large as the Bradshaw, of same color, and ripening latter part of September. Entirely free from rot. One of the best late plums for market.

**Imperial Gage.** Large, oval, greenish; juicy, melting, sweet, rich, sprightly and agreeable; parts from the stone. Tree very vigorous and productive. Middle of August and first of September.

**Lombard.** Medium, oval, violet red; juicy, pleasant and good; adheres to the stone. Tree vigorous and very productive. Middle to last of August.

**Monarch** (New). Fruit dark purple covered with a thin bloom; large size; specimens measuring six inches in circumference; flesh pale greenish yellow, parting freely from the stone; juicy with a pleasant flavor. September.

**Reine Claude** (Bavay's Green Gage). Round, greenish yellow, juicy, melting, sugary, rich and excellent; separates from the stone. Last of September.

**Shropshire Damson.** Originated in England. Dark purple, larger than the common Damson; very productive; ripens about September first.

**Shipper's Pride.** Fruit large; color bluish purple; handsome and showy; flesh firm, of excellent quality; very productive and is a valuable market variety.

**Yellow Egg.** A very large and beautiful egg-shaped, yellow plum. A little coarse, but excellent for cooking. End of August.

**Abundance** (Botan). Beautiful lemon yellow ground, nearly overspread with bright cherry and with a heavy bloom; large to very large, oblong, tapering to the point. Flesh orange yellow.

**Burbank.** Large and beautiful, clear cherry red with a thin lilac bloom; flesh a deep yellow, very sweet with a peculiar and very agreeable flavor. Ripens later than the Abundance; end of August.

**Red June.** An early ripening Japanese plum; medium to large; roundish, conical, purplish red, handsome; flesh yellow, quality good.



Fellenburg

*Plum Trees Do  
Exceptionally Well  
in Chicken Yards.*



Burbank

# Peaches

## PRICES OF ALL VARIETIES OF PEACH TREES

	Each	Ten	100
First Class, large size, No. 1 Grade, 4 to 6 ft. ....	40c	\$3.00	\$25.00
First Class, medium size, 3 to 4 ft. ....	25c	2.00	18.00
First Class, smaller size, 2 to 3 ft. ....	15c	1.25	10.00

Twenty or more at 100 rates.

**T**HE most universally planted fruit for home use. Peach trees are being planted profitably as fillers in apple orchards, for they make ground space, that is practically idle, pay well until the apples come into bearing. Peach trees will thrive wherever corn or potatoes can be raised. In planting, prune the tops to a clean whip, and each succeeding year prune the shoots of last year's growth.

**Belle of Georgia**  
**Carman**  
**Chair's Choice**  
**Champion**

**Crawford's Early**  
**Crawford's Late**  
**Elberta**  
**Fitzgerald**

**Greensboro**  
**Hale, J. H.**  
**Mayflower**  
**Mountain Rose**

**Niagara**  
**Rochester**  
**Smock**  
**Yellow St. John**

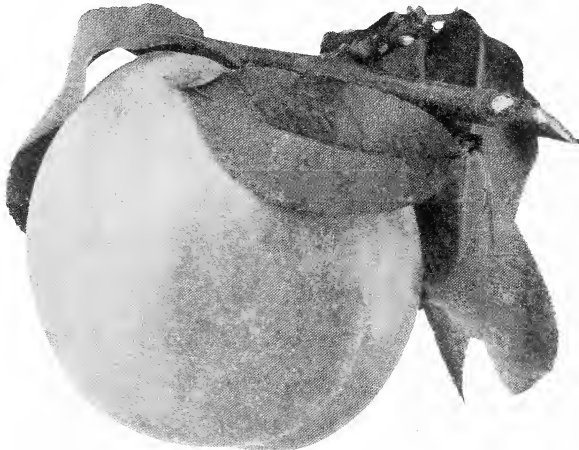
**Belle of Georgia.** Elicits praise from all who know it because of the great beauty of its fruits. At its best, it is one of the glories of the peach orchard, the fruits being large, creamy-white with a beautiful crimson cheek. It is an excellent shipper. August. Freestone.

**Carman.** A general favorite in nearly every peach region on this continent. There is much merit in the fruits, especially for a peach ripening so early. It is a brilliant red.

**Chair's Choice.** Fruit matures in late mid-season. Color, pale green dotted with reddish-green, is very attractive and is considered a select fruit and quite large. October. Freestone.

**Champion.** This is the best of the white freestone varieties. Skin creamy-white with red flush. This is also a desirable variety for commercial orchards. It is extremely hardy and of uniform good quality. Late August. Freestone.

**Crawford's Early.** This peach has all of the characteristics that gratify the taste. Besides being one of the very best in quality, it is one of the handsomest peaches. Color, rich red splashed and mottled with darker red and golden yellow. The flesh is beautiful and perfectly free from the stone. Matures in mid-season. Tree is vigorous and productive. First of September. Freestone.



Carman

**Crawford's Late.** Fruit is unsurpassed in appearance and scarcely equalled in texture of flesh and richness of flavor. Its color, soft tints of red and yellow. Fruit matures late. Used extensively in commercial orchards. Last of September. Freestone.

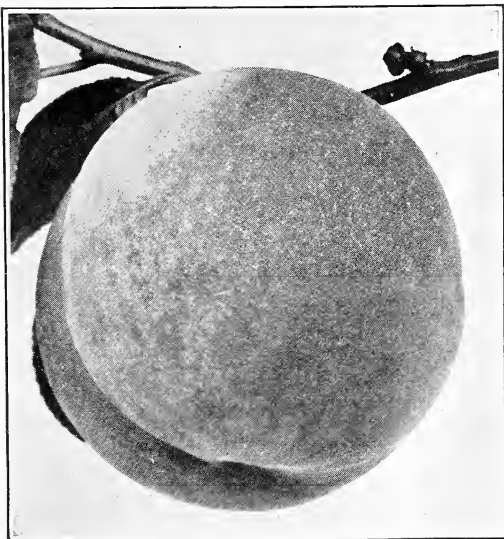
**Elberta.** The best peach of its season for all markets, as it has good shipping qualities. Probably the greatest commercial peach on the market today. The fruit is large, yellow with red cheek, juicy and highly flavored. Flesh is yellow and fine. Pit perfectly free. Tree is vigorous, hardy and a good uniform cropper. Ripens about ten days later than Early Crawford, late September.

**Fitzgerald.** This is one of the hardiest varieties of peaches, and the quality resembles Early Crawford. Fruit runs medium to large, has yellow flesh. Freestone. Extra hardy, succeeding in Canada and in Michigan perfectly.

**Greensboro.** A valuable early variety, not easily subject to rot, extra large, very early. Tree is extremely hardy and is therefore recommended for sections where difficulties are experienced with other varieties. Late July. Freestone.

**Hale, J. H.** This is a new peach combining the most desirable qualities of the other varieties. Brilliantly colored with deep golden yellow.

**Mayflower.** Earliest peach known. Color red all over, beautiful appearance. Originated in Copiah County, Miss.



Crawford Early

**Mountain Rose.** A favorite in New Jersey where it ripens early and grows to large size for so early a peach. A reliable cropper. Color white with carmine cheek, inside creamy white, abounding in rich, sweet juice. Early August. Origin, New Jersey.

**Niagara.** Fruit large, oval, yellow with brilliant red cheek. The stone parts freely from the flesh. Season is medium early, coming in just before Elberta. Last of August. Free.

**Rochester.** Has the habits and characteristics of the Crawford, but fully two weeks earlier. Yellow, freestone, good size, very sweet and fine flavor. Requires only half the usual amount of sugar for canning. Does not rot on the trees. Since its introduction this splendid variety has brought each season from 20c to 30c a basket more than the prevailing market price. In a class by itself.

**Smock.** A first-class late market peach. Ripens in early October and is considered first quality for canning or evaporating. Not sweet for eating, but has a distinctive, agreeable flavor. Large, yellow, orange red cheek; freestone. Origin, New Jersey.

**South Haven.** Early mid-season, large, yellow freestone, heavy bearer.

**Yellow St. John.** Medium size, orange yellow, with red blush on sunny side; flesh tender, juicy and quality very good. Middle of August. Free.



## Quinces

**T**HE Quince is highly valued for preserves, marmalades, jellies and flavoring purposes, and is worthy of more extensive planting. Thrives in warm, fertile soil, and the quality of the fruit improves with cultivation.

**Large size, 4-5 ft., 50c each**

**Champion.** Fruit very large; flesh cooks tender. Tree vigorous; bears young; season two weeks later than the Orange; keeps until January.

**Meech's Prolific.** Ripens between the Orange and the Champion. Bears early. Good quality and large size.

**Orange.** Fruit large, round, with a short neck; color bright yellow; flesh firm and tough until cooked, when it becomes tender, juicy and of excellent flavor.

**Rea's.** The largest and in every respect the finest variety of the quince.



Orange Quince

## Apricots

**B**EAUTIFUL and delicious fruit. In quality and appearance is between the plum and peach, combining qualities of both. Ripening early, together with its delightful flavor, makes it one of the most valuable fruits for the garden.

### On Plum Roots

#### PRICES OF ALL VARIETIES OF APRICOT TREES

	Each	10
<b>Largest Size, 1 year, 4 to 5 ft., 9/16 and up, XXX.</b>	75c	\$6.00
<b>Medium Size, 1 year, 3 to 4 ft., 7/16 to 9/16, XX.</b>	65c	5.00

**Alexander.** Fruit yellow, flecked with red, very beautiful and delicious. July.

**Alexis.** Very hardy; an abundant bearer; yellow, with red cheek; large; slightly acid, rich and luscious.

**Budd.** Medium to large; light orange with blush on sunny side; flesh sweet, juicy, with flavor of the peach; hardy and productive.

**Royal.** Hardy and abundant bearer; yellow, with red cheek; large; slightly acid, rich and luscious. July.

**Moorpark.** One of the largest. Orange red cheek; firm, juicy, with a rich flavor; productive. August.

# Nut Trees

**American Sweet Chestnut.** This is the well-known native variety with which nearly everyone is familiar. It is a stately tree, attaining great height when mature. It is beautifully symmetrical and when in blossom is as handsome as a tree can be. It bears a nut of good quality and seldom fails to produce a good crop. Aside from their crop value, all the chestnuts are specially desirable for shade purposes and for ornamental planting. **Trees 4 to 5 ft. in height, \$1.00 each, \$9.00 per 10?**

**Black Walnut.** This species is a common and stately forest tree in the Middle and Western states; grows from forty to sixty feet high; has an open, spreading head and is rapid in growth; produces large crops of nuts with rough, hard shell containing rich, oily kernels of fine flavor. **Trees 5 to 6 ft., 90c each. 4 to 5 ft., 70c each.**

**Butternut.** A fine native tree producing a large, longish nut, which is prized for its sweet, oily, nutritious kernel. **Price of Butternut trees, 4 to 5 ft., 75c each.**

**Chestnut, Spanish.** A handsome round-headed tree, producing abundantly, very large nuts that find a ready market at good prices. **Price of Spanish Chestnut trees, 4 to 5 ft., \$1.00 each.**

**English Walnut.** A fine, lofty-growing tree, with handsome spreading head; produces large crops of thin-shelled, delicious nuts which are always in demand at good prices. **Trees 3 to 4 ft., \$1.50 each.**



English Walnut



# Select Hardy Native Grapes

**Easy to Grow and Very Profitable**  
*Extra Size Two Year Old Vines*

PRICES OF ALL VARIETIES EXCEPT  
CONCORD AND CACO

	Each	10	100
2 year, No. 1.....	20c	\$1.60	\$14.00
5 at 10 rate. 20 or more at 100 rate.			

CONCORD

	Each	10	100
2 year, No. 1.....	15c	\$1.00	\$8.00
1 year, No. 1.....	10c	.75	5.00

Twenty or more at 100 rate.

**Catawba (Red).** Bunch medium, shouldered; berries large, deep coppery red, becoming purple when ripe; flesh somewhat pulpy, juicy, sweet, aromatic and rich, one of the latest, does not ripen well in the North.

**Concord (Black).** Too well known to need much description; is considered by many to be the best all around Grape grown; is extremely hardy, vigorous and productive; bunches large, compact; berries large, juicy, buttery and sweet; will succeed almost anywhere.

**Agawam (Red).** Bunch large, compact, shouldered; berry large, dark red or nearly black; flesh tender, juicy, vinous and good quality; later than Concord.

**Brighton (Red).** Bunch medium to large, quite compact; flesh rich, sweet and best quality; color dark crimson or brownish red; vine vigorous and hardy.

**Caco (Red).** This new red grape has a most delicious flavor, and is of the highest quality. It is one of the earliest grapes in ripening. **50c each, 10 for \$4.00.**

**Campbell's Early (Black).** A strong, vigorous and hardy sort; ripens early and bears abundantly; berry large, black with blue bloom; tender, sweet and rich; good market berry; it is a good shipper and long keeper.



Niagara—Concord

**Delaware (Red).** One of the best red Grapes; bunch small and compact; berry small, round, beautiful light red; flesh rich, vinous, sweet, and delicious; best quality; a good market Grape.

**Moore's Diamond (White).** A vigorous grower, entirely free from mildew and a prolific bearer; bunches large and compact, slightly shouldered; color delicate greenish white with yellow tinge when ripe; berries tender, juicy and nearly transparent, sweet and rich, ripens about two weeks before Concord.

**Moore's Early (Black).** Bunch large, berry round with a heavy blue bloom, quality said to be better than Concord; hardy and prolific; good market berry; ripens about two weeks before Concord.

**Niagara (White).** One of the leading white sorts; bunch large, shouldered, compact; berry large, yellowish white, juicy, vinous and sprightly, quality good; skin tough, making it a good shipper and market berry.

**Salem (Red).** Bunch medium, shouldered and compact; vine strong and vigorous; berry large, coppery red, thin skin, sweet and sprightly; a good market berry.

**Worden (Black).** A seedling of the Concord; bunch large and compact, berry round, black with blue bloom; pulpy, juicy and very pleasant; ripens several days earlier than Concord.



## Raspberries

A READY market can always be found for Raspberries. When well cared for they are sure to return a good profit. A patch of Raspberries should be renewed about once in five years, as by that time the quality of the berries deteriorates and the fruit becomes small. The plants should be well manured and cultivated at frequent intervals. We offer the following varieties:

### PRICES OF STRONG, HEALTHY PLANTS

Twenty-five	Hundred	Thousand
\$1.00	\$3.00	\$20.00

**Columbian (Purple).** A strong grower, unexcelled for productiveness and desirable for canning. Fruit very large, purplish color, rather soft; rich, sprightly flavor.

**Cumberland (Black).** The largest of all blackcaps. A healthy, vigorous grower, throwing up stout, stocky, well-branched canes that produce immense crops of magnificent berries. Fruit very large, firm, quality good. Mid-season.

**Cuthbert (Red).** Medium to large, crimson; hardy and prolific. The most reliable sort. Fine for market or garden. Succeeds well over a large range of territory both North and South. Sufficiently firm so that the fruit ships well and of such good quality as to make it one of the best for home use.

**Golden Queen (Yellow).** Very large, hardy, vigorous and productive. No garden should be without it. Canes hardy, of strongest growth.

**Gregg (Black).** Of great size, of fine quality; very productive and hardy. It takes the same position among blackcaps as Cuthbert among the red sorts.

**Herbert (Red).** Fruit is large, bright to deep red. It is a very strong grower and very productive. Canes strong and vigorous. Season begins a few days before Cuthbert.

**Kansas (Black).** One of the best of the early ripening blackcaps; the berries are large and showy. Canes are of strong growth, very hardy and prolific, with tough, healthy, clean foliage.

**Loudon (Red).** The Loudon new red raspberry ripens with the earliest and hangs late. Very productive and a good shipper.

**Marlboro (Red).** A very profitable, early market variety with large, light crimson fruits, of good size and flavor. The crop covers a period of four or five weeks in ripening.



Cuthbert

**Plum Farmer (Black).** It is covered with a grayish bloom, like the bloom on a grape, which makes it very attractive in appearance. It ripens very early and quickly. The fruit is enormously large.

**St. Regis (Everbearing).** A new acquisition to the red raspberry family. Fruit commences to ripen with the earliest and continues on young canes until October. Color bright crimson.

## Blackberries

PRICE OF No. 1, STRONG PLANTS,  
BEST SELECTED VARIETIES

25 for \$1.00, 100 for \$3.75, 500 for \$15.00,  
1000 for \$25.00

**Blowers.** Claimed to be the hardest, most productive, of finest quality and to bring the highest market price.

**Eldorado.** The vines are very hardy and vigorous, and their yield is enormous. The berries are large, jet black, borne in large clusters and ripen well together; they are very sweet, melting, have no hard core and keep for eight or ten days after picking with quality unimpaired.

**Mersereau.** Remarkably strong grower, upright, producing stout, stocky canes. An enormous producer of extra size berries, which are brilliant black and retain color; extra quality; sweet, rich and melting, without core. Ripens very early.

**Snyder.** Extremely hardy, enormously productive; medium size, no hard, sour core; sweet and juicy. Ripens early.



Eldorado



## Currants

PRICE OF ALL VARIETIES OF CURRANT  
BUSHES, EXCEPT PERFECTION

Extra Size, 2 Year, Strong Bushes, 20c each,  
10 for \$1.50

**Cherry (Red).** Very large; deep red; rather acid; bunches short.

**Fay's Prolific (Red).** Of large size, fine flavor and twice as prolific as the Cherry.

**Perfection (New).** Color, bright red. Larger than Fay and Cherry. Very productive. Quality fine. Not as acid as Fay. 25c each, 10 for \$2.00.

**White Grape.** The finest of the white sorts.

**Wilder.** A red currant, productive to the highest degree. Excellent in size and quality.

## Gooseberries

Fine for Pies—Easy to Grow—  
Very Productive

**Downing.** Medium to large, pale green. Quality good. Upright productive bush. Midseason. The most widely grown variety.

**Houghton.** Small, dull reddish brown fruit, tender, juicy, sweet, and pleasant, ripening soon after mid-summer. Profuse bearer.

PRICES OF GOOSEBERRIES

2 Year, Extra Fine, 25c each, \$2.00 per 10, \$4.50  
per 25, \$8.00 per 50, \$15.00 per 100



Downing



RASPBERRIES, Cumberland

# Asparagus

(Two Years Old)

One of the most delicious vegetables, easily grown from our strong two-year-old roots.

**Washington.** A new rust-resistant Asparagus fast taking the lead over all other varieties for size, vigor and tenderness as well as disease resistance.

\$1.00 per 25, \$2.50 per 100, \$15.00 per 1000.

**Palmetto.** Very early and of good quality.

**Mammoth.** Vigorous large shoots that remain white.

### PRICES OF PALMETTO AND MAMMOTH

60c per 25, \$2.00 per 100, \$10.00 per 1000



Washington



Early Scarlet



# Rhubarb

(Pie Plant)

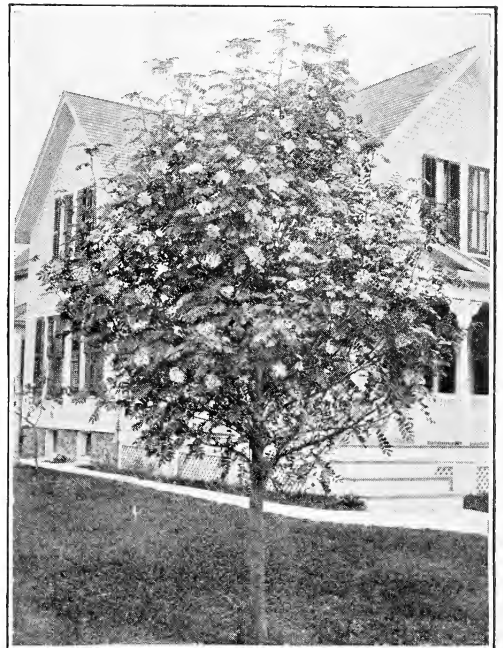
Rhubarb is the earliest available material in the spring for fresh pies and sauce. Every family should have a few rhubarb roots, for there is nothing in the fruit or vegetable line that is so beneficial to the human system in the spring months. Set plants 12 to 18 inches apart in rows.

**Early Scarlet.** Rather small, early and good.

**Linnaeus.** Large, early, tender and fine.

### PRICES, STRONG, 2 YEAR PLANTS

20c each, \$1.50 per 10, \$10.00 per 100



Bechtel's Crab





## Beautify Your Home Grounds Trees for Shade and Ornamental Purposes

### DECIDUOUS TREES

**W**HAT is more pleasing than a proper planting of Shrubbery, Evergreens and Shade Trees around a home. They beautify and make it more attractive. Have you not noticed the shrubbery and evergreens around the homes of a number of your friends, how they add to the appearance, and how you were attracted to them. An investment of a few dollars will bring about the desired results.

#### Deciduous Trees

**American Elm.** A natural spreading and drooping tree of our own American meadows and forests. It is very attractive in any suitable location, is entirely hardy and easily transplanted. There are more Elm trees planted along our streets and highways than any other variety. **8 to 10 ft., \$1.50 each.**

**Ash, Mountain.** A very beautiful tree for ornamental planting. In the early fall it bears clusters of bright red berries. **6 to 8 ft., \$1.50 each.**

**Bechtel's Crab.** When in bloom appears to be covered with delicate pink, perfectly double small roses of delicious fragrance. **3 to 4 ft., \$1.00 each.**

**Catalpa Bungei (Umbrella Catalpa).** Grafted on stems 5 to 6 feet high, it makes an umbrella shaped top without pruning. Perfectly hardy, and flourishes in almost all soils and climates. Leaves large, glossy, heart-shaped. A very desirable ornamental. **5 to 6 ft., \$2.00 each.**

**Catalpa Speciosa.** One of the most rapid growers. Large, heart-shaped, downy leaves, and compound panicles of white flowers. **8 to 10 ft., \$1.00 each.**

**Cut-Leaved Weeping Birch.** This noble tree is not only the most popular of the weeping trees, but it is decidedly the best. Its tall, slender, yet vigorous growth, graceful branches, silvery white bark and delicately cut foliage, present a combination of attractive characteristics rarely met with in a single tree. **4 to 6 ft., \$2.00, 6 to 8 ft., \$3.00 each.**

**Maple, Ash-Leaved (Box Elder).** A fine, rapid growing variety, with handsome, light green foliage and spreading head; very hardy; desirable for street planting and succeeds in many sections where other varieties do not thrive. **8 to 10 ft., \$1.00 each.**

**Maple, Norway.** This is one of the hardiest ornamental shade trees, and one of the most beautiful. It makes more of a wide spreading tree than the sugar maple. **Price, 8 to 10 ft., \$2.50 each, 10 for \$20.00.**

**Maple, Silver-Leaved or Soft.** Foliage bright green above and silvery underneath. An exceedingly rapid grower, makes a large tree. **Price, 8 to 10 ft., \$1.50 each, 10 for \$12.00.**

**Maple, Schwedler.** Reddish purple foliage in early spring, changing to deep bronze in fall. **Price, 6 to 8 ft., \$3.00 each.**

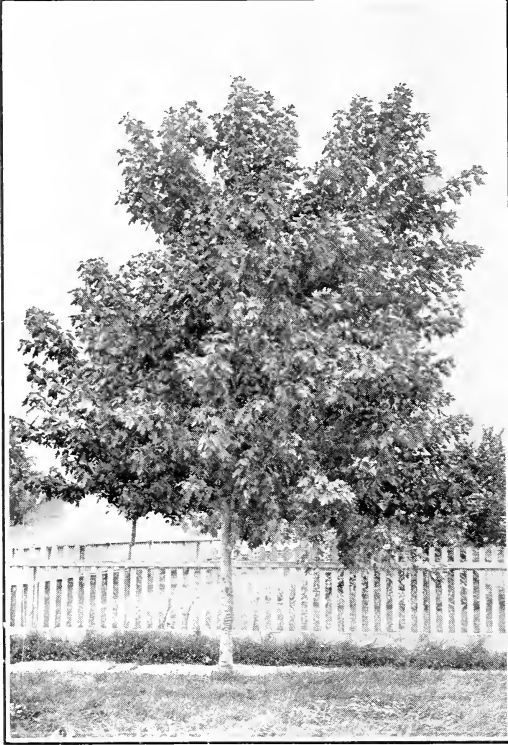
**Maple, Sugar or Rock.** Is considered slow grower, but long-lived. **Price, 8 to 10 ft., \$2.00 each.**

**Maple, Wier's Cut-Leaved.** One of the most remarkable and beautiful trees, with cut or dissected foliage. Its growth is rapid, shoots slender and drooping, as graceful as cut-leaved birch. **8 to 10 ft., \$1.50.**

**Mulberry, Downing.** This tree is not alone valuable for the large, refreshing berries it bears, but is very handsome as a lawn or street tree. This should be in every yard or garden. **6 to 8 ft., \$1.00 each.**

**Mulberry, Russian.** Very hardy, vigorous grower, very productive, fruit black and of medium size. 5 to 7 ft., 60c each.

**Mulberry, Tea's Weeping.** The most graceful and hardy weeping tree in existence. Forms a perfect shaped head, with long, slender, willowy branches, drooping to the ground. 2 year heads, 5 to 6 ft., \$2.00 each.



Maple Silver Leaf

**Poplar, Carolina.** Is one of the most rapid growers among shade trees, frequently growing eight feet during one season and thus making fine shade in two or three years. It has an advantage over other shade trees because it will grow in any kind of soil. 6 to 8 ft., 50c each, 8 to 10 ft., 75c each, 10 for \$5.00.

**Poplar, Lombardy.** A well-known variety from its tall spire-like form. Where it is desired to mark a boundary line, or where there is an entrance to a driveway these trees are very effective. They transplant safely, grow quickly and for many purposes are attractive and desirable. 8 to 10 ft., \$1.00 each, 10 for \$7.00.

**Thorn, Double Pink.** Double pink or rose flowers with white tips. 4 to 5 ft., \$2.00 each.

**Thorn, Paul's Double Scarlet.** Flowers deep crimson with scarlet shade; very double. 4 to 5 ft., \$2.00 each.

**Willow Babylonica.** Our common well-known weeping variety; forms a large round-headed, graceful tree; requires plenty of room, and where space can be spared, is quite desirable. 8 to 10 ft., \$1.50 each.



American Elm

**Willow, Golden.** This willow is especially desirable on account of its golden colored bark with light green leaves. A splendid grower. 6 to 8 ft., \$1.00 each.



Catalpa Bungei

# For Winter Effect Plant Evergreens

## THEY ARE THE ARISTOCRATS OF THE LAWN

**A**LL Evergreens offered in this catalogue have been twice or three times transplanted and are guaranteed to be taken up and shipped in such a careful manner as to insure their safe arrival anywhere in the United States.

**American Arbor Vitae.** A beautiful native tree much used for hedges, screens, singly on lawn and in tubs for porches. It is a handsome little tree and if allowed to grow natural, will be quite tall and pyramid shape. Can be trimmed and kept in any form or height. In the summer is bright green above and yellow below, and when winter comes, changes to the richest tone of brown and bronze. **18 to 24 in., \$1.00 each, 2 to 3 ft., \$1.50 each, 3 to 4 ft., \$2.00 each.**

**Irish Juniper.** Junipers are handsome evergreens, always neat and clean. This variety grows exceptionally slim. A general favorite for cemeteries and other planting. **2 to 3 ft., \$2.00 each.**

**Colorado Blue Spruce.** This Blue Spruce is hardy, healthy and very beautiful. Its foliage is a steel blue. **12 to 18 in., \$3.00 each, 2 to 3 ft., \$6.00 each.**

**Spruce, Norway.** There is no evergreen so largely planted as the Norway Spruce. It is indeed a tree possessed with great beauty at all seasons of the year, but particularly in winter when its branches are weighed down with newly fallen snow. This spruce is a rapid grower and is often used as a lawn fence between village or city lots. Norway Spruce can be planted most effectively in groups on the lawn, imitating nature, planting without any particular order. **2 to 3 ft., \$1.00 each, 10 for \$9.00, 3 to 4 ft., \$2.00 each.**

**Juniper, Pfitzers.** Of the spreading type this is perhaps the most popular. Foliage a grayish green,



Juniper, Pfitzers

slightly drooping and branches are horizontally spreading. **18 to 24 in., \$3.00 each.**

**Pine, Austrian.** A strong, hardy grower, fine for windbreaks; grows rapidly on light, sandy soil. **3 to 4 ft., \$3.00 each.**

**Pine, Scotch.** A very rapid grower. The branches strong. Foliage is a bluish green. **3 to 4 ft., \$3.00 each.**

**Retinispora Pisifera.** Foliage feathery light green, glaucous beneath. **18 to 24 in., \$3.75 each.**

**Retinispora Plumosa (Plumed Cypress).** This is one of the best pyramidal varieties. Foliage a grayish green, very finely cut and has a feathery appearance. **18 to 24 in., \$3.00 each.**

**Retinispora Plumosa Aurea (Golden Plumed Cypress).** Soft, plume-like, golden foliage, particularly bright in spring and contrasting beautifully with green grass and other evergreens. **18 to 24 in., \$4.00 each.**

**Arbor Vitae, Globosa.** Forms a dense, low globe; handsome shade of green. **12 to 18 in., \$2.00 each.**

**Arbor Vitae, Golden.** Dwarf, dense-growing variety, holding its golden yellow color all summer. **18 to 24 in., \$3.50 each.**

**Arbor Vitae, Pyramidal.** A valuable upright evergreen of dense, compact habit. Foliage light green. **2 to 3 ft., \$3.00 each.**

**Mugho.** Dwarf Mountain pine. Low dense and spreading in growth, usually broader than its height. One of the most attractive and valuable of our dwarf Evergreens. **10 to 12 in., \$2.00 each, 12 to 15 in., \$3.00 each.**



Colorado Blue Spruce

THE FRIENDLY EVERGREENS—Wonderfully Effective for Color for Winter for Charming Contrasts in Summer.

# Hedges

## THE BEAUTIFUL LIVING FENCES THAT GIVE PRIVACY TO THE HOME

**Barberry Thunbergii.** A shrub of marked excellence on account of its bright green foliage which changes to brilliant colors in the fall, and its bright scarlet berries, which are very conspicuous throughout the winter. Their habit is dwarf and regular, spreading. Grows well in the shade and extensively used in landscape work. Is very hardy, has never been known to winter-kill. It bears the shears well and makes a dense hedge.

	Each	10	100
12 to 18 in.....	20c	\$1.00	\$ 8.00
2 to 3 ft.....	30c	2.50	20.00

**California Privet.** A rapid and vigorous grower. It has handsome, glossy, oval-shaped leaves which remain well into the winter. Very popular for ornamental hedges. Can be trimmed to any desired shape or height. Extra well-branched.

### SPECIAL PRICES

	Each	10	100
12 to 18 in., 2 years.....	10c	\$ .75	\$ 4.00
18 to 24 in., 2 years.....	15c	1.00	5.00
2 to 3 ft., 2 years.....	20c	1.25	6.00



California Privet

# Hardy Climbing Vines

## BEAUTIFUL FOR SOFTENING BARE WALLS, FENCES AND TRELLISES

### STRONG, THRIFTY, WELL-ROOTED, 2-YEAR-OLD VINES

**Chinese Purple Wistaria.** A very beautiful, popular species, with racemes of pale lilac flowers borne in great profusion in May. An exceedingly graceful climber for training on porches or arbors. The stems grow quite large, climb high and twine tightly. Their growth is very rapid. **60c each.**

**Chinese Matrimony Vine.** Vigorous and hardy climber, flowers bright purple, succeeded by scarlet berries, nearly one inch long. Excellent for trellises. **50c each.**

**Ampelopsis Veitchii (Boston Ivy).** For covering buildings of brick and stone; clings tightly to the smoothest surface. Bright green leaves, changing to brilliant colorings in fall. **50c each.**

**Clematis Henryii.** Single; the finest white Clematis; very large, fine flowers; grows rapidly; blooms freely during summer and autumn. **75c each.**

**Clematis Jackmanni.** Single. Very large; deep purple; forms a perfect mass of richest bloom. **75c each.**

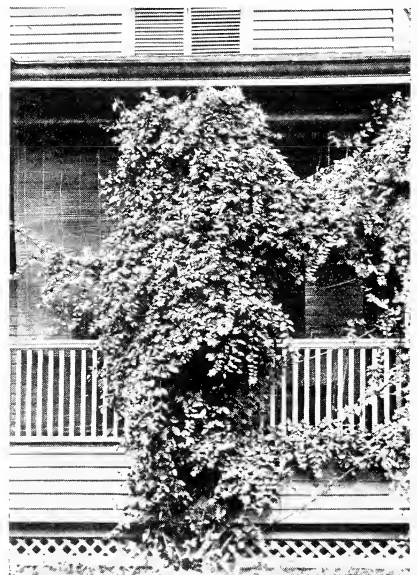
**Clematis Paniculata (Sweet-scented Japan Clematis).** The flowers are of medium size, fragrant, pure white, borne in immense sheets in September, when very few other vines are in bloom. **50c each.**

**Dutchman's Pipe (Birthwort).** Large, heart-shaped leaves and quaint, pipe-shaped green flowers. **75c each.**

**Hall's Japan Honeysuckle.** Flowers white, bloom from July until winter. Fine climber. **40c each.**

**Trumpet Vine (Bignonia Radicans).** A robust, woody vine. Its orange scarlet, trumpet-shaped flowers cluster at the tip of the branches. **50c each.**

**Mad. Andre Clematis.** The flowers are a distinct crimson red. **75c each.**



Hall's Japan Honeysuckle

# Exquisite Grace and Beauty—*The Roses*

## HARDY ROSE BUSHES

**T**HE varieties that we offer for sale are strong, thrifty, two-year-old, field grown, bloomed in the nurseries the past season. The very best that skill, experience and capital can produce.

### Hybrid Perpetual Varieties

The Hybrid Perpetuals or "June Roses" are among the hardiest and most vigorous of the double bush roses. In general the blooms are very double, large and full. Always satisfactory in any part of the country. This class of roses has been gaining in popularity of late because they are not exacting in the care required to grow them successfully.

Each 10 100

Prices, all Varieties..... 50c \$4.50 \$40.00

Twenty or more at 100 rates.

**Alfred Colomb.** Bright carmine; clear color, large, deeply built form; exceedingly fine.

**American Beauty.** The flowers are a deep crimson color, of very large size, and the most fragrant of its class. It is a continuous bloomer. Should be protected in winter.

**Anne de Diesbach.** Brilliant crimson, sometimes shaded with bright maroon. A superb garden sort; fragrant; one of the hardiest and best.

**Baronne de Bonstetten.** Rich, dark red, passing to velvety maroon, highly fragrant. Very double.

**Baroness Rothschild.** Light pink, cupped form, very symmetrical, without fragrance, very beautiful. A moderate grower only.



Marshall P. Wilder

**Baby Rambler.** A dwarf (bush). Just the thing for beds and borders and for edging walks. They are bound to take the place of geraniums and other plants which have to be removed each year. You can have them in crimson and white.

**Coquette des Alpes.** Stronger in growth and larger in flower than any of the other Hybrid Noisettes. The blooms are of medium size, white slightly tinted with rose on the edge of the petals.

**Clio.** New. The perfection in Hybrid Perpetuals. Of delicate satin blush with a little deeper center. Large, well shaped and very double. Strong, robust, hardy and prolific. A jewel.

**Frau Karl Druschki.** Snow Queen. The finest white Hybrid Perpetual rose, with large, full flowers of splendid form. It is marvelous in its beauty in half opened bud and in the pure white of the full opened bloom. It holds its foliage well and is healthy and vigorous and in hardiness it equals any of the Hybrid Perpetuals.

**General Jacqueminot.** Brilliant crimson; large and fine. Beautiful in bud and a universal favorite.

**General MacArthur.** Dazzling crimson scarlet, exquisitely perfumed. One of the grandest red roses ever offered, either for cutting or bedding.



J. B. Clark

RESULTS TELL THE STORY

**Gracilis.** Moss Rose. Deep pink, well mossed. Very beautiful. Keeps quite long after cutting. Bush extremely hardy. Will thrive where many roses fail.

**George Arends.** Clear, tender pink; good bud and perfectly formed flowers.

**Harison's Yellow.** Extremely fragrant, profuse in bloom.

**J. B. Clark.** Intense, deep scarlet, heavily shaded, blackish crimson. Large, full, with immense petals.

**Madame Gabriel Luizet.** Flowers light silvery-pink, shading paler at petal edges. Bears an abundance of bloom.

**Hugh Dickson.** Intense crimson, shaded scarlet; very large, full and magnificent form, with high pointed center; growth upright and vigorous, free and continuous blooming; is the finest of all autumn roses, highly perfumed.

**Magna Charta.** Pink and carmine; very large and full; a profuse bloomer. Fragrant. Free grower.

**Maman Cochet.** This superb rose is well-known as a queen among roses. One of the best and most beautiful pink varieties grown, and quite hardy. The flowers are of enormous size, borne on long, strong stems, just right for making bouquets.

**Margaret Dickson.** New, perfectly hardy and very vigorous. A free summer and autumn bloomer. Flowers white with pale flesh center, of a waxy texture and delightful fragrance.

**Marshall P. Wilder.** Bright cherry carmine; very fragrant and one of the freest bloomers; vigorous.

**Mrs. John Laing.** Very free flowering; commences early and continues to bloom profusely until fall. Delicate pink color. Very fragrant.

**Paul Neyron.** The largest of all. Deep rose color. A free bloomer and vigorous grower.



Prince Camile de Rohan

**Prince Camile de Rohan.** Very dark velvety crimson, changing to intense maroon.

**Ulrich Brunner.** Large flowers of light red. Shade peculiar to the Ulrich Brunner. The abundant flowers grow on long stems borne by a plant of very vigorous growth.

**Soleil d'Or** (Golden Sun). New, hardy, yellow Rose; glossy foliage. Moderate in growth and sure to be popular.

## Hybrid Tea Roses

(Everblooming Bush Roses)

	Each	10	100
All Varieties, 2 year Strong Bushes.....	65c	\$6.00	\$50.00
Twenty or more at 100 rates.			

**T**HIS class of Roses is noted principally for its free and everblooming characteristics, and are commonly called "Monthly Roses." They bloom early and continue to bloom throughout the Summer. They are not as hardy as the Hybrid Perpetuals, but can be successfully grown in cold climates, if afforded Winter protection.

**Betty.** A lovely and deliciously fragrant Rose with long buds and coppery rose blooms of informal shape, overspread with golden yellow; plant vigorous; a continuous bloomer, and especially good in autumn.

**Duchess of Wellington.** Large, well formed buds, opening to semi-double, saffron-yellow flowers, stained with crimson and changing to lighter yellow. Fragrant and pleasing and of the utmost possible freedom of growth and bloom, so that it can be depended upon to produce flowers all season. One of the Roses necessary in any collection.

**Etoile de France.** The gold medal Rose of France. Flowers are large and borne on long, stiff stems. Color a lovely shade of clear crimson-red velvet. Very fragrant and keeps well.

**Geo. Ahrends.** Also known as Pink Druschki. A large and beautiful pink Rose, resembling in size and shape of flower the wonderful white Frau Karl Druschki.

**Gruss an Teplitz.** An extremely useful and dependable variety, succeeding well all over the United States. A profusion of beautiful, clear crimson-scarlet, fragrant flowers are borne from June until frost on a vigorous and shapely plant. An excellent border and useful also as a hedge, if not cut back.

**J. J. L. Mock.** A dependable Rose; very large, full and fragrant; petals silvery rosy white inside, outside carmine-pink. A good bedding variety and a continuous bloomer.

**Kaiserin Augusta Victoria.** A great favorite. Large, double white blooms on long stems; fragrant.

*Viking New Red Raspberry*



*A Peerless Among Raspberries*

# Viking New Red Raspberry

ORIGINATED IN CANADA  
AT ONTARIO EXPERIMENTAL STATION

## THE ORIGINATOR'S DESCRIPTION

THE Viking red raspberry is a hybrid from a cross of the Cuthbert by Marlboro and is characterized by extreme vigor of cane which is stout, strong, straight and grows to 7 to 8 feet in height. This extreme vigor is no doubt to its hybrid origin and consequently results in its high yielding qualities.

The fruit is large and bright red in color, which makes it very attractive to the consumer. It has been placed on sale in the retail stores side by side with the Cuthbert and the housewife invariably selected the Viking in preference. The quality is good and it makes excellent preserves. The fruit is borne on a large torus from which it is easily detached before fully mature and this fact together with the fact that the canes remain upright when loaded with fruit makes it preferred for picking by workers.

The season is from a few days before Cuthbert to 5 to 6 weeks later.

Yields depend so much on soil, cultivation and fertilization that it will vary according to those factors. We have had at the rate of 10,000 pints to an acre on a measured  $\frac{1}{4}$  acre.

It is perfectly hardy in temperature of 20 below and has come through every season without injury. The Experimental Farm at Ottawa, Ont., reports it as coming through alive to the tip every season and their temperatures go to 35 below.

Inquiry as to its merits may be obtained from Mr. George L. Slate, Raspberry Specialist at the N. Y. State Experimental Station, Geneva, who in correspondence with the originator, wrote in part as follows: "If I were setting out a planting myself, I think that I would prefer Viking to any other sort."

Mr. L. J. P. Richards, former President of the Niagara County Farm Bureau, purchased fifty plants of us last Spring from which he gathered 10 quarts of luscious berries. Last summer on the Buffalo market, we sold Viking alongside of Cuthbert at 25c a pint, 40c a quart—an advance of 5c a quart over the Cuthbert, and the buyer took the Viking every time.

Our plants come direct from the Originator's farm, Prof. F. C. Reeves, Canadian Horticulturist. Purity of variety guaranteed. Supply limited.

Good strong, well rooted plants, \$1.00 per dozen; \$8.00 per 100. 25 or over at 100 rates.

## THE WILSON NURSERIES

THOMAS MARKS & Co.

*Nurserymen and Fruit Growers*

Wilson, Niagara County, New York

"THE HOME OF GOOD NURSERY STOCK"

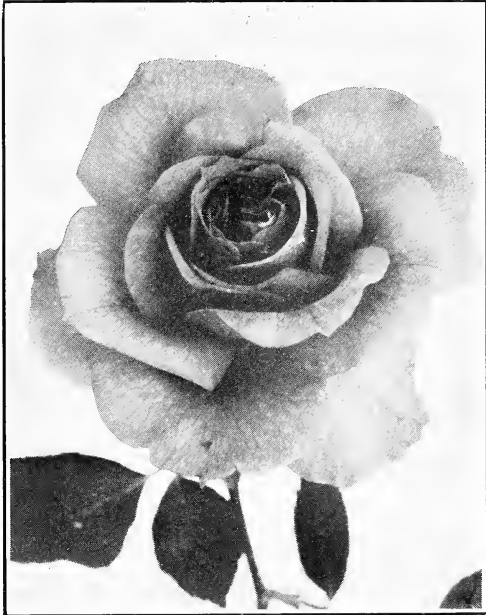


**Killarney.** Large, long-pointed buds, opening to large, loose blooms of flesh color, borne on long, strong stems.

**Killarney White.** Sport of Killarney and very similar to it in size, shape and fragrance, but pure white in color.

**Lady Hillingdon.** The wonderful color of this beautiful Rose is equalled by none. It has long, willowy stems that are in no sense weak, as the buds are held upright; has a long, slender, pointed bud of brilliant deep golden yellow, improving in color as the flower matures.

**Los Angeles.** One of the most notable American garden Roses. Its color is a luminous flame pink, toned coral, shaded translucent gold at base of petals. An upright, sturdy grower, bearing perfect, fragrant flowers on strong stems. Desirable in every garden.



Mme. Butterfly

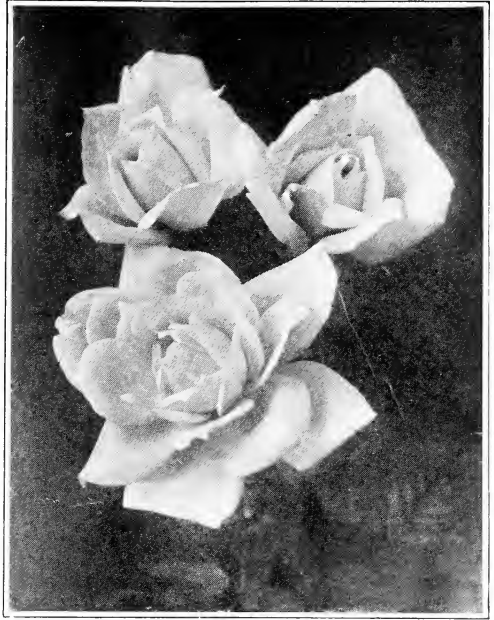
**La France.** Rich satiny peach, changing to deep rose; large and full. A constant bloomer. The sweetest of all.

**Mad. Caroline Testout.** One of the most popular of the Hybrid Teas for the garden. The flowers are extra large, and a brilliant, shining pink.

**Mme. Butterfly.** This is a sport of Ophelia, it shows an even better growth, with more and larger flowers, in a brilliant pink, suffused apricot and gold. These flowers are in the ideal Rose form, of good texture and fragrance, and are unusually enduring. The plant is free and fine in growth and habit; among the very best.

**Madame Edouard Herriot.** Buds coral-red, shaded with yellow at the base, the open flowers of medium size, semi-double, are coral-red shaded with yellow and bright rosy scarlet.

**Mrs. Aaron Ward.** A most desirable and dependable Rose that will probably produce more flowers than any other yellow Rose. Semi-double, cup-shaped, deep Indian yellow flowers; fragrant; color glowing intense pink.



Gruss an Teplitz

**Ophelia.** This highly desirable Rose is successful for outdoor as well as for greenhouse culture. The beautifully formed, salmon-flesh flowers are borne on long, stout stems and are freely produced until frost. Large, dark green, leathery foliage; plant of vigorous, upright habit.

**Premier.** A delightfully fragrant and beautifully formed, rich, dark pink Rose of good size. Stems long, strong and thornless; plant robust.



Premier

**Radiance.** A wonderful American production. Vigorous, upright, bushy plants bearing a continuous supply of very large, beautiful, light silvery pink to salmon-pink flowers on long stems. A good bedding variety. The most dependable pink and one of the best for this climate.

**Sunburst.** Bright, glowing orange blooms, paling slightly at edge of petal, gives an excellent imitation of a real sunburst. Leathery, bronzy foliage.



Radiance



Etoile de France



Kaiserin Augusta Victoria



Killarney

## Climbing and Rambler Roses

Price, 2 year No. 1 Bushes..... Each      Ten  
40c      \$3.50

**T**HE Climbers and Ramblers afford a burst of bloom and their attractive foliage is an object of beauty when not in bloom. They are most adaptable and can be trained into formal or informal shapes in the garden for hedges, trellises or pillars, or permitted to scramble over an old stump, or beautify a stone pile. The roses grow freely and will endure neglect.

**American Pillar.** Very large, handsome flowers of light, bright crimson, with a clear white eye surrounding numerous golden yellow stamens. These flowers fade to an agreeable light pink and are in great clusters. A superb variety.

**Baltimore Belle.** Pale blush, nearly white, compact. A fine flower.

**Climbing American Beauty.** The moderately fragrant, rich rosy crimson 3-4 inch flowers are produced in great abundance. It will succeed in almost any situation and makes a very vigorous growth.

**Crimson Rambler.** Great masses of crimson, semi-double flowers are borne by these vigorous plants. Desirable pillar and porch plant.

**Dorothy Perkins.** One of the most notable climbing roses. Clear cherry-pink, slightly fragrant; borne in great profusion and lasts a long time. The plant makes a very strong growth; foliage is glossy, bright green, and persists until cold weather.

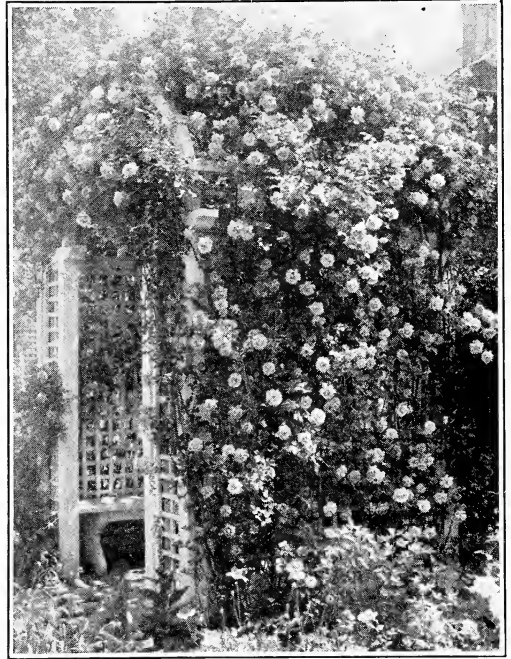
**Dr. Van Fleet.** Probably the best climbing rose in cultivation. Perfectly formed, long pointed, deep pink buds on long stems, with several in a cluster, that opens to a lighter shade of pink. It is a vigorous grower with glossy, dark green foliage. It is a delight to the eye all summer.

**Paul's Scarlet Climber.** The brightest and purest red of all the Pillar Roses. Flowers are borne in clusters that retain their color until they fall. The color being intensified by the numerous yellow stamens. A vigorous grower and a good bloomer.

**Queen of the Prairies.** An old-time favorite. Bright pink flowers that are sometimes white-striped, in compact clusters. Plant is hardy in any climate.

**Silver Moon.** To the rose lover who has not enjoyed Silver Moon, a delightful experience is in store in contemplating this extraordinary vigorous climber, decorative all through the growing season by reason of its great canes and deep, rich foliage, but literally a wonder at bloom-time for its long, well-shaped buds of faint yellow which open into immense pure white flowers, often reaching 4 inches or more in diameter. These blooms are semi-double and with very distinctly curled and curved center petals which surround the bright yellow and add piquancy to the whole effect. An indispensable white rose.

**Tausendschon.** Or Thousand Beauties, is the appropriate name of this lovely, vigorous and desirable Hardy Climbing Rose; almost thornless. The buds are cherry pink, opening to softer shades, all shades being found in a single cluster; has glossy, light green foliage. A highly desirable and distinctive rose for covering walls, fences, porches and pergolas, and unique among climbers.



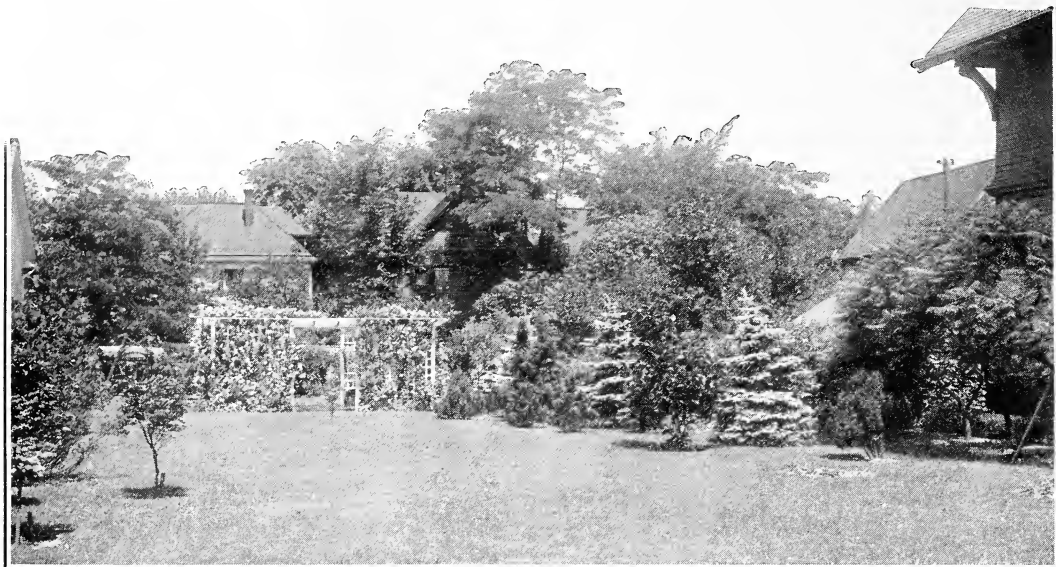
Dr. Van Fleet

### Planting and Care of Roses

Roses should be planted in good, rich soil. Dig the hole deep enough so that it can be set in the ground about two inches below where it was budded. That will prevent suckers from growing up from the natural root. Do not trim the root off too severely, but cut the tops off about eight inches above the top of the ground. Pack good, rich soil thoroughly around the roots, being careful not to let any compost come in contact with the roots. Keep the top of the earth thoroughly worked around the bushes the entire season. Each following spring they should be pruned ten to twelve inches. Always use a pruning shears, as a knife has a tendency of loosening them from the earth.

**How to Keep Roses Healthy.** It is very important to keep your plants healthy and vigorous and free from diseases and insects. If troubled with plant lice, spray vigorously, covering thoroughly every part of the foliage with sulpho-tobacco soap or kerosene emulsion, made by mixing two parts of kerosene with one part of sour milk. Dilute with twenty parts of soft water. Bordeaux Mixture is one of the best preventives of mildew and black spot, which are fungous diseases, usually caused by continuous wet weather. By careful attention the diseases and insects may be kept down and plants will reward you with their beautiful blooms and foliage.

ALWAYS FIND THE BEST RESULTS



## Charming Effects with Flowering Shrubs *are quickly secured and become more beautiful with the years*

**T**HE planting of Shrubs adds greatly to the beauty and value of the home. In the following list of Shrubs, you will find sorts that will bloom from early Spring until late Summer and some of the sorts will follow with ornamental berries until late in the Winter.

Shrubs are most ornamental when they are planted in masses, against buildings, fences or property lines, or as border plantations along walks or drives, although some are exceedingly beautiful when planted as single specimens.

We have described only the very best shrubs, but we are in a position to supply anything in this line you may desire to plant.

### PRICES OF ALL FLOWERING SHRUBS (except as noted)

	Each	10
2 to 3 ft., 2 year Strong Bushes. . . . .	40c	\$3.75

**Almond** (*Amygdalus*). The flowers are very showy, produced in great abundance and useful for their earliness. Fine plants to use in grouping or for lawns.

**Almond** (Double Pink). Small, double pink flowers borne in abundance in May.

**Almond** (Double White). Small, double white flowers borne in abundance in May.

**Althea** (or Rose of Sharon or Hibiscus). The altheas are free growers and not particular as to soil. Large, bell-shaped flowers of striking colors in August and September, when but few other sorts are in blossom. They attain a height of from six to ten feet.

**Althea** (Double Purple, Double Red, Double Pink, Double White). Very large and double, with reddish-purple center.

**Tree Altheas.** Flowers are the same as bush form. Grown on a single stem instead of being branched from ground as bush form. 3 to 4 ft., **\$1.00 each.**

**Buddleia** (Everblooming Butterfly Bush). This shrub, set out in spring, will mature to full size the first year. A single plant will show, the first season, as many as fifty flower spikes of beautiful lilac color. Both foliage and blooms very attractive. Desirable for specimen planting. **25c each.**

### New Red-Leaved Barberry

This new Barberry is very unusual and different from any shrub developed in many years. Its foliage is a rich, lustrous, bronzy-red. It resembles the Barberry *Thunbergi* in all respects except color. Full exposure to the sun is absolutely necessary to make the coloring become intense and brilliant as the summer advances. **10 to 15 in., 65c each, \$6.00 per 10.**

**Barberry** (*Thunberg's*). From Japan. A very pretty species of dwarf habit and small foliage changing to a beautiful coppery red in autumn. Valuable as an ornamental hedge.

**Calycanthus** (Sweet-scented shrub). The wood is fragrant; foliage rich; flowers are of chocolate color, having a peculiarly agreeable odor.

**Deutzia, Gracilis.** Pure white flowers in June. Two feet high when fully grown.

**Deutzia, Crenata, Double-Flowering.** A hardy, vigorous shrub that does not suffer from insects or diseases and early in the season is fairly covered with very showy double white flowers that on the edge are slightly tinged with rose. Handsome, desirable shrub.

**Deutzia, Lemoinei.** Dwarf, the flowers are large, pure white and produce freely.

**Deutzia, Pride of Rochester.** Blooms in May. Double, white, tinted with rose on the edge.

**Fringe, Purple or Smoke Tree.** A very elegant and ornamental large shrub, with curious, hair-like flowers of a pinkish brown color which sometimes literally cover the tree and remain all summer.

**Fringe, White.** A popular and much admired shrub of moderate growth, and rounded form, with large, dark green, glossy leaves, and long drooping panicles of beautiful white fringe-like flowers.

**Forsythia Fortunei** (Golden Bells). Deep yellow flowers in great profusion in April.

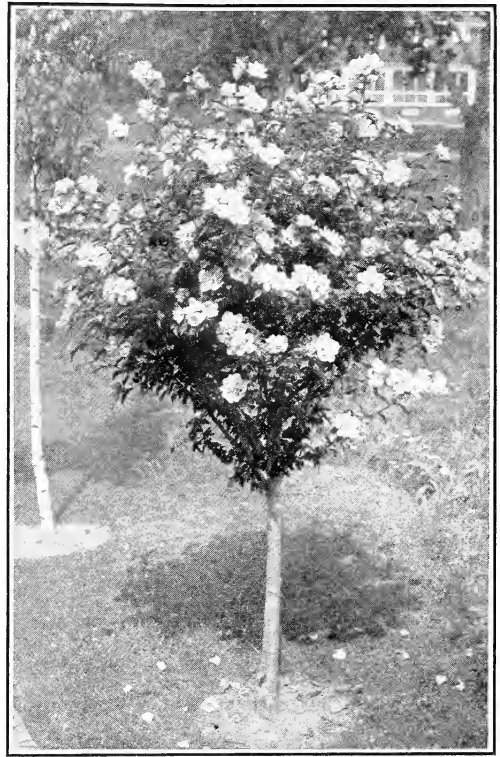
**Golden-Leaved Elder.** The best of all the colored shrubs. A plant of this bush in a bed, or a border, or on the lawn, is a conspicuous feature, the foliage being as yellow as gold.

**Hydrangea Paniculata Grandiflora.** Absolutely hardy; thrives in all soils; grows rapidly and blossoms profusely. The flowers are pure white, afterward changing to pink, and are borne in large pyramidal trusses often more than a foot long and six to eight inches in diameter. Begins to bloom early in August, and continues to bloom for several weeks. Wherever known it is considered to be one of the finest flowering shrubs. **25c each, \$2.25 per 10.**

**Hydrangea, Arborescens Grandiflora Alba** (Hills of Snow). This hardy American shrub is the very finest addition to this class of plants. The blooms are of the very largest size, of pure snow-white color, and the foliage is finely finished.

**Lilac, Purple.** An old favorite; purple flowers.

**Lilac, White.** A well-known favorite.



Tree Althea

### Lilac—Double Flowering

**Belle De Nancy.** Very large panicles of double flowers, brilliant satiny rose, white center. **\$1.00 each.**

**Chas. Joly.** Superb dark variety. Deep reddish purple flowers; large and double. **\$1.00 each.**

**Mme. Lemoine.** Superb clusters of pure white, double flowers. A grand variety. **\$1.00 each.**

**President Grevy.** Blue. Flowers largest of all, double. Blooms profusely. **\$1.00 each.**

### Mock Orange or Syringa

**Coronaris flore-pleno** (Garland Syringa). Flowers pure white; highly scented. Double. Grows 6-8 feet.

**Foliis Aureus** (Golden Syringa). Yellow foliage, white flowers. Very sweet scented. Grows 3-5 feet.

**Lemoinei.** Small white flowers. May. Grows 6-8 feet.

**Nivalis\*** Free flowering. White. Largest bloom of the single Philadelphus. May and June. Grows 5-6 feet.

**Virginal.** Very large, double white flowers in clusters of five to seven; blooms in June. 5-7 feet.

**Quince, Japan.** Dark green foliage, and showy deep, scarlet flowers of good size.



Hydrangea Hills of Snow

**Spiraea Prunifolia.** Blooms early, and is very effective. Small, double white flowers.

**Spiraea Anthony Waterer.** A dwarf variety of great beauty. Its broad flat heads of red flowers continue in perfection all summer.

**Spiraea Billardi.** A hardy, free growing shrub. During July every branch and twig is tipped with a spike of beautiful blood-red flowers 4 to 6 inches in length.

**Spiraea Callosa Rosea.** Has large panicles of deep rose-colored flowers in July and August, blooms nearly all summer; fine.

**Spiraea Van Houttei.** This is undoubtedly the best of the spiraeas. White blossoms.

**Snowball, Common.** A popular shrub. Makes a large bush. Bears balls of pure white flowers in June.

**Snowball, Japan.** Erect, compact, with purple tinted corrugated foliage; a solid mass of white in June.

**Syringa, Common.** Large, white flowers; very hardy.

**Snowberry\*** (*Symphoricarpos Racemosus*). Very ornamental, hardy shrub. Small, pink flowers followed by large, waxy white berries, which remain during winter. June and July. Grows 4-5 feet.

**Sweet Pepper Bush** (*Clethra Alnifolia*). Very hardy; blooms every season without fail; cold never harms it; flowers pure white, in spikes three to six inches long. A bed of *Clethras* will perfume the air for a long distance around. Grows 4-5 feet.

**Tamarix, Africana.** The pink flowers, filmy foliage and gracefulness make them one of the most desirable shrubs for background or interplanting. Will grow in poor, dry soil where other shrubs fail. Blooms early. Grows 4-5 feet.

**Upright Honeysuckle** (Pink). Pink flowers which contrast beautifully with the foliage.

**Weigela, Candida.** The flowers are of the purest white, blooming in June, and all summer. Hardy.

**Weigela, Eva Rathke.** Showy, bright red flowers borne freely during the summer.

**Weigela, Rosea.** One of the most charming shrubs in cultivation; it cannot be too highly recommended; the flowers are large and of deep rosy color, and are borne in great profusion.

**Tree Hydrangea.** Same as *Hydrangea P. G.* except in tree form, being grafted on a *Hydrangea* stalk about 3 feet high. When in full bloom are very attractive. **\$1.00 each.**



*Spiraea Van Houttei*

### The Hall-Mark of Quality in Direct Selling

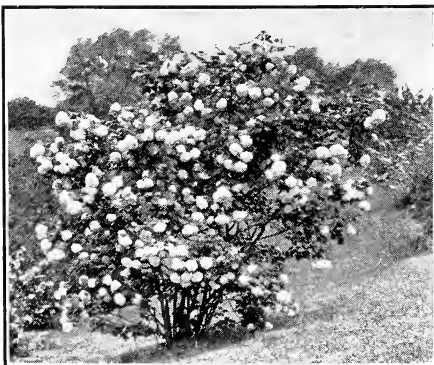
In every line of business there are certain hall-marks of quality that have become traditional words. "Sterling" on silver; "Tiffany" on fine jewelry, and other names of a more wide-spread use, each carrying with it the symbol of unquestionable quality.

In retail selling, the trade-mark "Marshall Field" means the backing of an unquestioned business concern on every bit of merchandise carrying that famous name and "Dependable Nursery Stock" is The Hall-Mark of Quality in Direct selling.

A comparison of prices may reveal the fact that our prices are a trifle higher than some, but a comparison of stock received will reveal the fact that we back up our advertising with the goods.



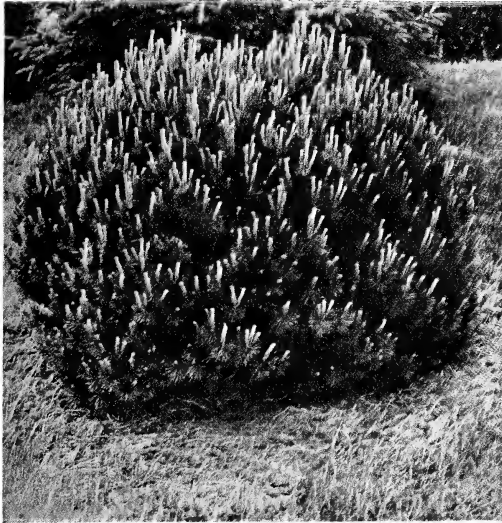
**Our Responsibility.** We exercise the greatest care and give our personal attention to cutting buds and scions and packing orders. With all precaution mistakes and errors sometimes creep in. We guarantee any plant or tree or shrub we send out to be alive and in growing condition and true to name. We pack stock so that it will carry any distance. It may be on the road two or three weeks or longer and not suffer to any extent. We hold ourselves in readiness at all times to replace on proper proof any tree, plant, or shrub that may prove untrue to name or that arrives in damaged condition. It is also mutually agreed between ourselves and purchaser that our guarantee shall in no case make us liable for any sum greater than that originally paid for the trees, plants, or shrubs that are unsatisfactory for any of the reasons stated above.



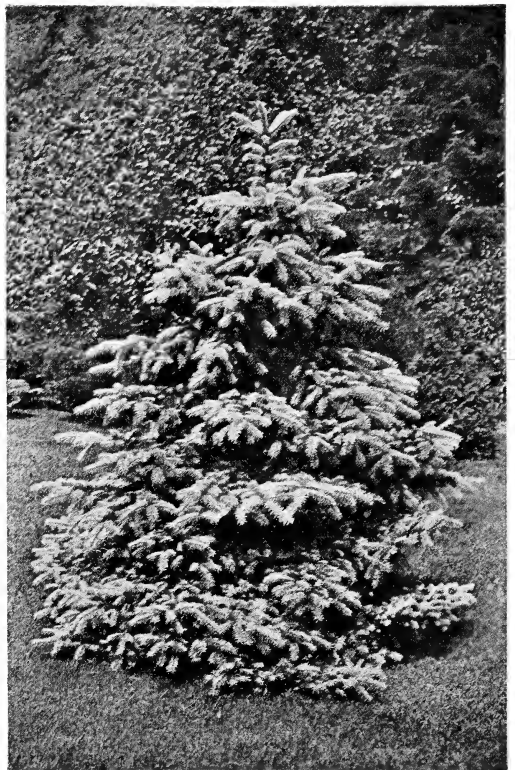
Common Snowball

*The Friendly Evergreens*

THE ARISTOCRATS OF  
THE LAWN



Mugho Pine



Colorado Blue Spruce

*Wonderfully Effective for Color for Winter  
—for Charming Contrast in Summer*



American  
Arbor Vitae 3 ft.

Irish Juniper  
2 ft.

Siberian Globe  
Arborvitae 18-24 in.

Retinospora  
Pissifera 2-3 ft.

Norway Spruce  
2-3 ft.



## “THOMAS MARKS & CO. HALF-DOZEN”

### *Hybrid Tea Roses*

1—BETTY

2—AMERICAN BEAUTY

3—MRS. AARON WARD

4—LOS ANGELES

5—MME. BUTTERFLY

6—PRINCE CAMILE DE ROHAN

These roses have been selected with greatest care and include some of the choicest varieties. One of the most pleasing assortments you can buy, source of a constant delight and satisfaction. The best stock grown at a surprisingly low price, possible only because we sell in such large quantities.

Strong two-year old, field grown bushes, which will blossom the first year.